

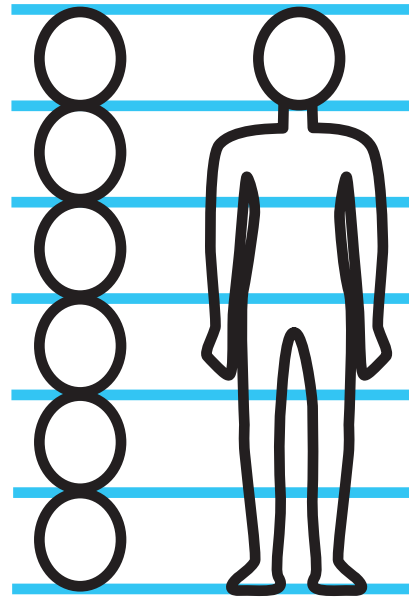
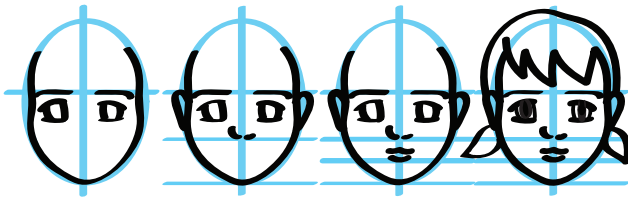
Characters

To draw characters it is important to learn about **proportions**.

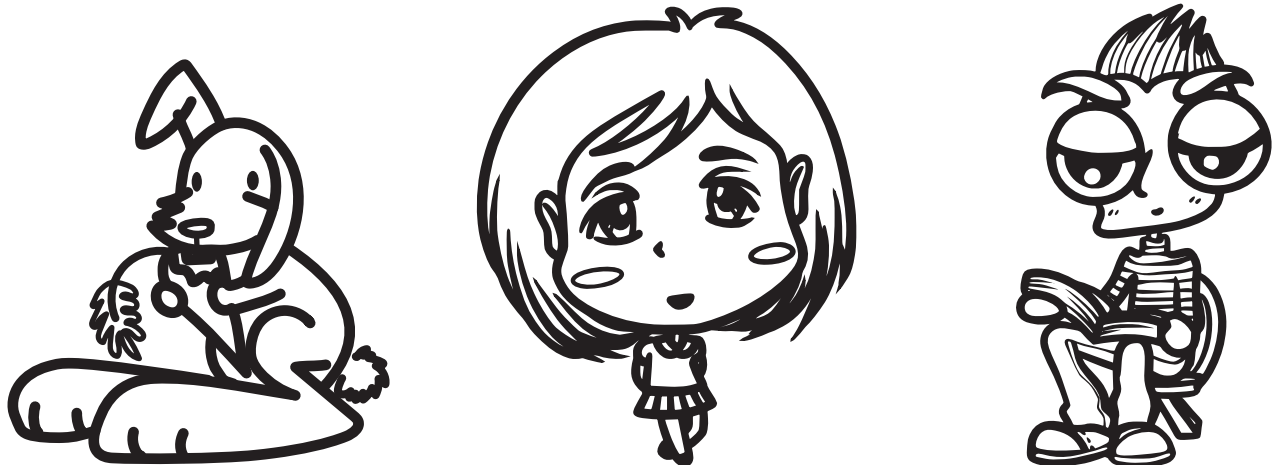
Proportions are the size of one shape compared to others.

For example, your body is about 6 heads high!

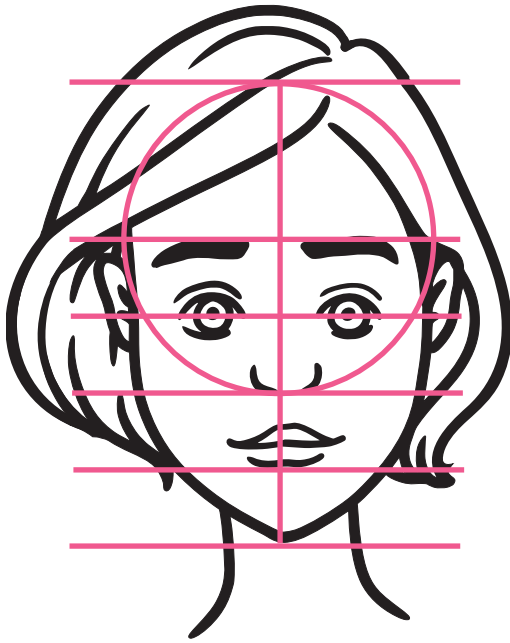
You will learn about face and body proportions in this chapter.



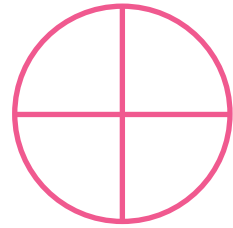
Once you have learned the rules of proportions you can bend them!
You can create caricatures by making one part of your character's body bigger.
Caricatures are funny and expressive!



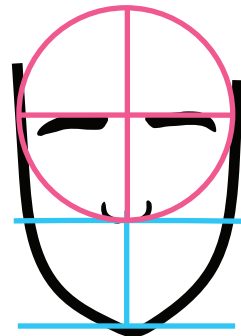
Portrait - Proportions



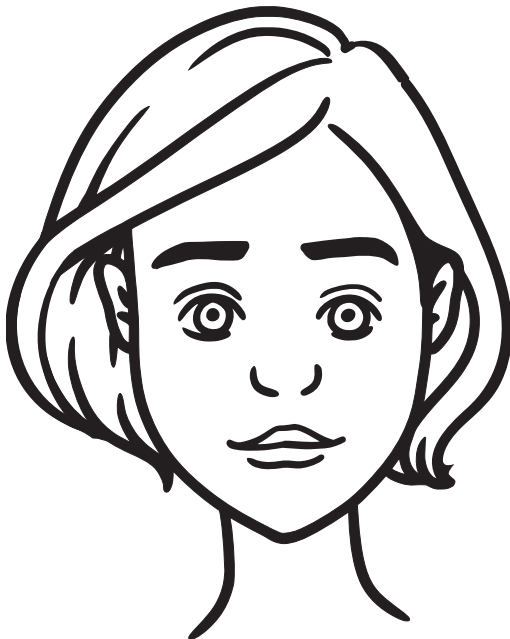
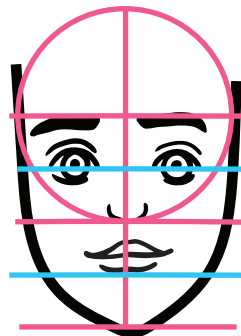
1. With a pencil, draw a circle with a cross in the middle.



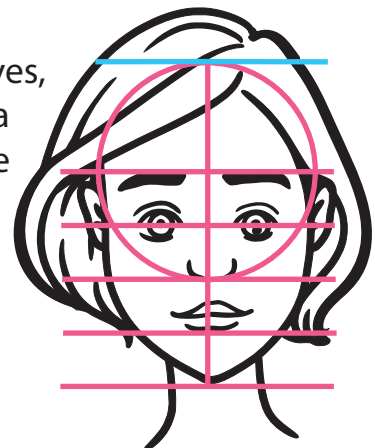
2. Draw a line under the circle. Below the circle, add the distance of half a circle and draw a line. Draw the eyebrows, nose, chin and jawline.



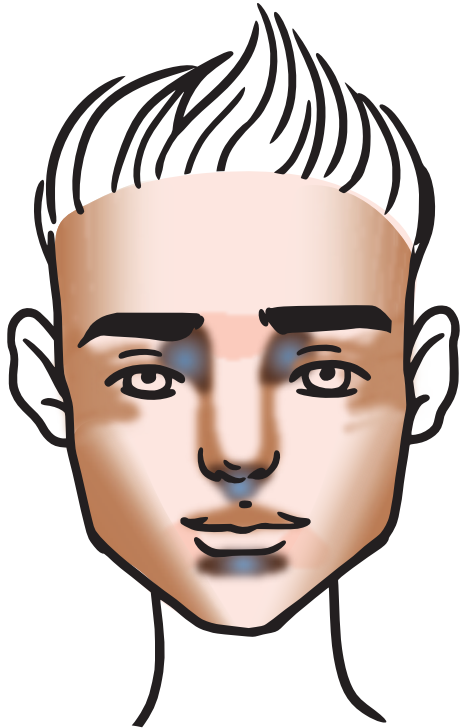
3. Draw two more lines to separate the two bottom parts in two equal parts. Using the lines as guides, draw the eyes and mouth.



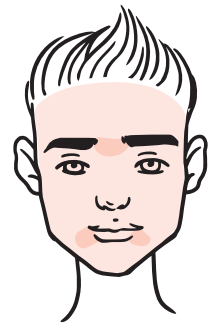
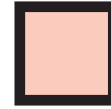
4. In line with the eyes, draw the ears. Add a line at the top of the head. The hair sits above the top line, how high depends on the hairstyle.



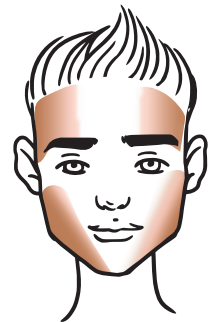
Portrait - Coloring



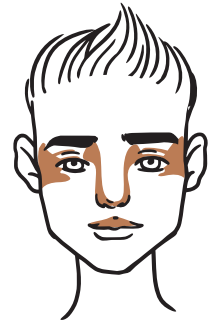
1. Colour the face with a light color like Peach. Let it dry, then go over a second time to add light shadows.



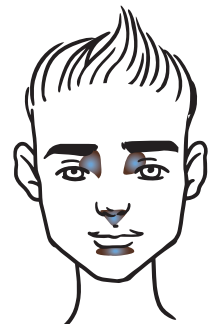
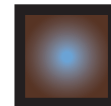
2. Fuse Peach with Tan to create shadows on the cheeks and forehead.



3. Add Tan for mid-shadows around the eyes, nose and on the upper lip.



4. For the darkest shadows, fuse Mid Blue with Dark Brown for just a few seconds. Begin in the middle with Mid Blue and draw outwards with a circular motion.



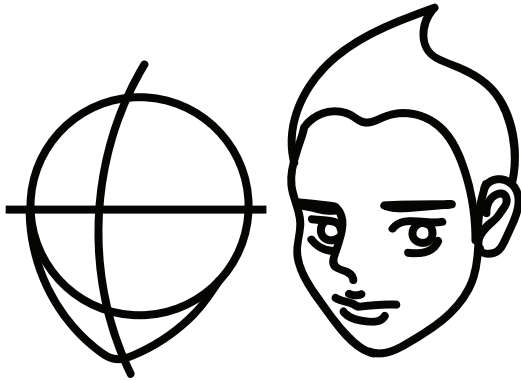
Let your drawing dry between layers!
Experiment with color combinations to create different skin tones.

Your turn!

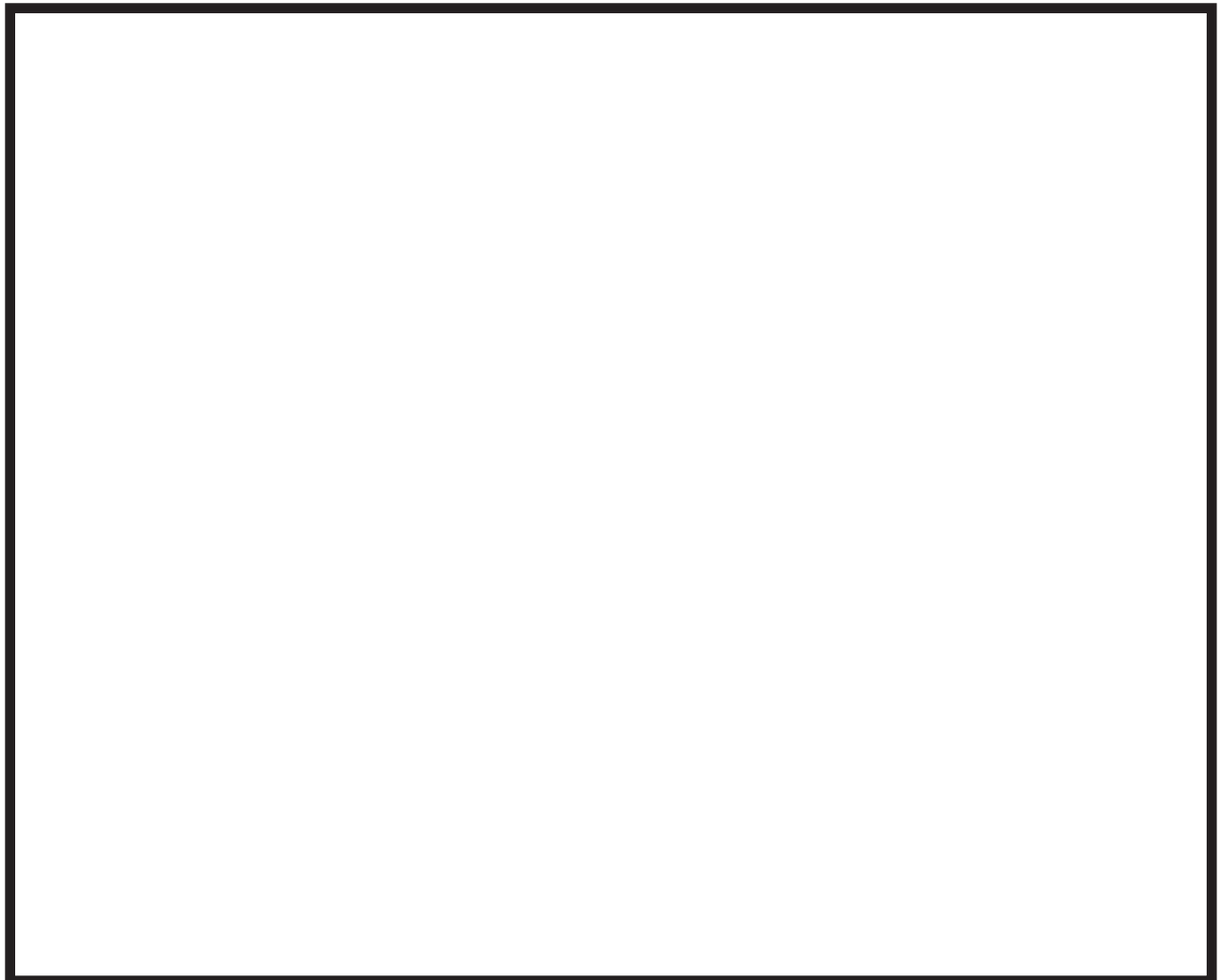
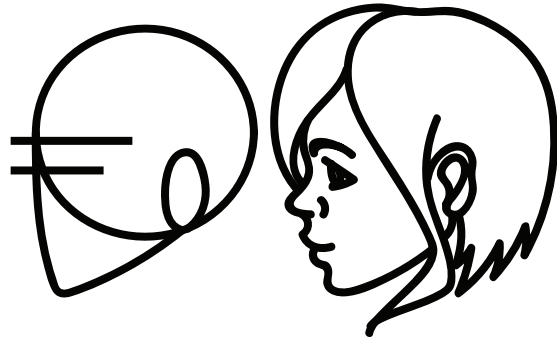
Follow the steps for proportions and coloring to draw and color a portrait.

You can apply the same steps to different head angles.

3/4 view



side view



Features and Hairdos

